

## ASSEMBLING THE LASERBITS EXHAUST FAN

**Tools Needed:** Phillips Screwdriver, 10mm Wrench

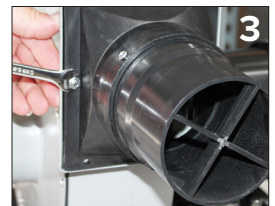
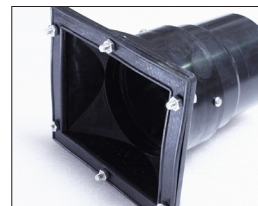
### Exhaust Fan Parts List:

- |                            |  |
|----------------------------|--|
| 1 Exhaust Fan mounted base | 1 Plastic 4-inch adapter with hardware |
| 4 Wheels with hardware     | 1 Handle with hardware                 |
| 2 Wall Mount Hooks         | 2 4-inch Hose Clamps                   |

### How to Assemble the Exhaust Fan

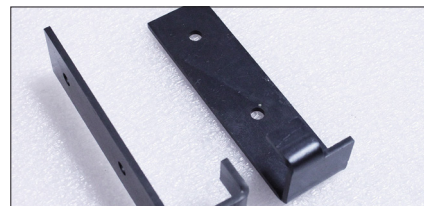
Unpack and inspect all the components prior to assembly. Report any broken or missing parts by contacting Johnson Plastic Plus Customer Service at 800-869-7800.

1. Mount the black metal handle using the two mounting bolts. Do not overtighten the mounting bolts.
2. Mount the wheels to the bottom of the base. Use 4 mounting bolts per wheel.
3. Install the plastic 4 inch adapter on the square opening of the fan. Make sure the foam gasket is in place. Use the bolts to attach the plastic adapter to the fan housing. Do not over tighten the mounting bolts.
4. The exhaust fan is now ready to use.



## Wall Mount of the Exhaust Fan

- Skip Step 2 and do not mount the wheels.
- Securely mount a piece of 16 x 16 x 1/2 inch plywood to the wall. Use 4 each #10 x 3/4 wood screws to mount the included Wall Mount Hooks to the plywood.
- Hang the assembled Exhaust Fan onto the two Wall Mount Hooks.



## Exhaust Fan Use Notes:

- Use short sections of rigid flexible duct to attach the Exhaust Fan to the Laser and longer lengths of smooth walled duct. Reinforced plastic or aluminum flexible duct is recommended. Avoid flimsy plastic dryer duct. Use hose clamps to secure flexible duct.
- Mount the exhaust fan at the end of the exhaust duct run.
- Use smooth walled duct with minimum numbers of bends for longer duct runs.
- Seal duct connections with a liquid sealant and aluminium duct tape to eliminate leaks.



**JOHNSON**PLASTICS  
**PLUS**

Phone: (800) 869-7800 • Email: [service@johnsonplastics.com](mailto:service@johnsonplastics.com)

Connect with us: