

# *SureColor F570 Pro*

## Product Reference Guide



# Product Overview



# Product Overview





# Product Overview



22.7" Width

38.2" Width

Total Footprint: 6 ft<sup>2</sup>



# Epson PrecisionCore microTFP



- Extreme Print Quality
  - Print resolutions up to 2,400 x 1,200 dpi for amazing image quality
  - Precision ink drop control for outstanding clarity and sharpness
- Fast Print Speeds
  - New 1.33" print head, 800 nozzles per color
  - Quite possibly one of the fastest dye-sublimation transfer printers in it's class
- Commercial-Grade Reliability
  - Developed for use with Epson Genuine Dye-Sublimation ink for high reliability
  - **Nozzle Verification Technology (NVT)** – automatically detects nozzle conditions and adjusts if necessary



# Epson Genuine Dye-Sublimation Ink

Ink Bottles with Auto-Stop Technology

Simple Ink Bottles

Less environmental impact  
versus standard plastic  
cartridges

**OEKO-TEX®**  
CONFIDENCE IN TEXTILES  
**ECO PASSPORT**

NEP 1902 Nissenken

Textile chemicals. Tested and verified.  
[www.oeko-tex.com/ecopassport](http://www.oeko-tex.com/ecopassport)



Long Shelf-Life

Up to 2 years unopened

High Capacity 140mL Bottles

140 mL per bottle



# Epson Edge Print PRO Workflow Software

Epson SureColor F570 Pro



- SureColor F570 Professional Edition Printers Come Standard with Epson Edge Print PRO
  - Featuring an Adobe® PDF Print Engine and Adobe PostScript® 3™ Engine for outstanding graphic file compatibility
  - Easy to use software with intuitive user interface
  - Job layout and nesting controls to increase productivity and minimize paper waste
  - Powerful color management technology easy to use and intuitive workflow
  - Equipped with tools specifically for digital textile printing including as step-and-repeat, spot color matching, and custom color library support.
  - Hot-Folder support for simple drag-and-drop printing
  - Boost workgroup productivity with Epson Edge Print PRO Print server that supports network jobs from Mac and Windows clients



POWERED BY

Adobe PDF Print Engine



Adobe® PostScript® 3™

# Epson Edge Print PRO Workflow Software

User Interface Overview

**Job Tool Bar**  
Top level controls for print jobs

**List Switch**

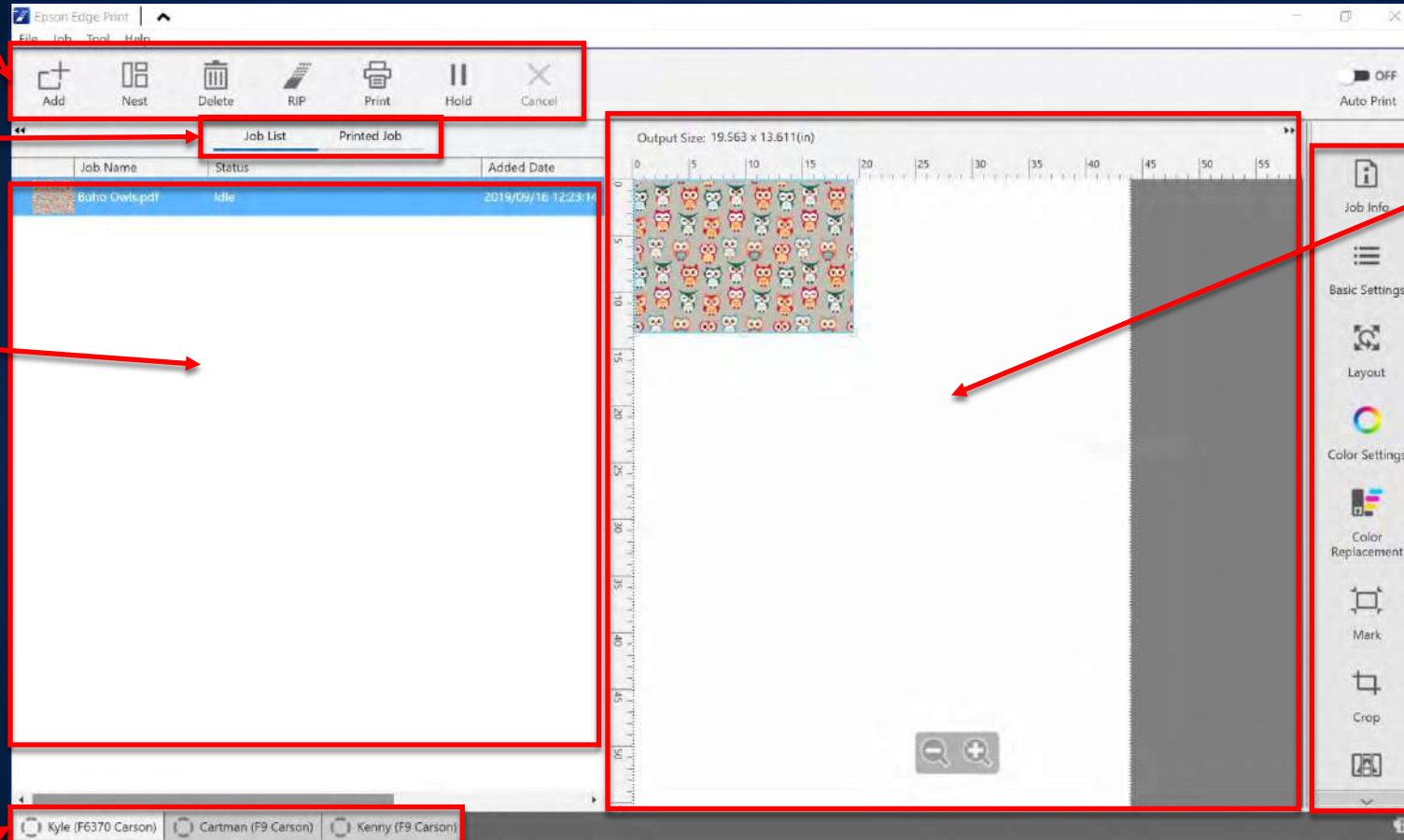
Switch between Active and Past jobs

**Job List**

Thumbnail, Name, Active Status

**Printer List**

Up to 4 Printers can be active  
Icon displays printer status:  
Idle, Printing, Warning, Error, or  
Offline



**Preview Area**

Visual display as it will be printed on paper

**Job Settings Menu**

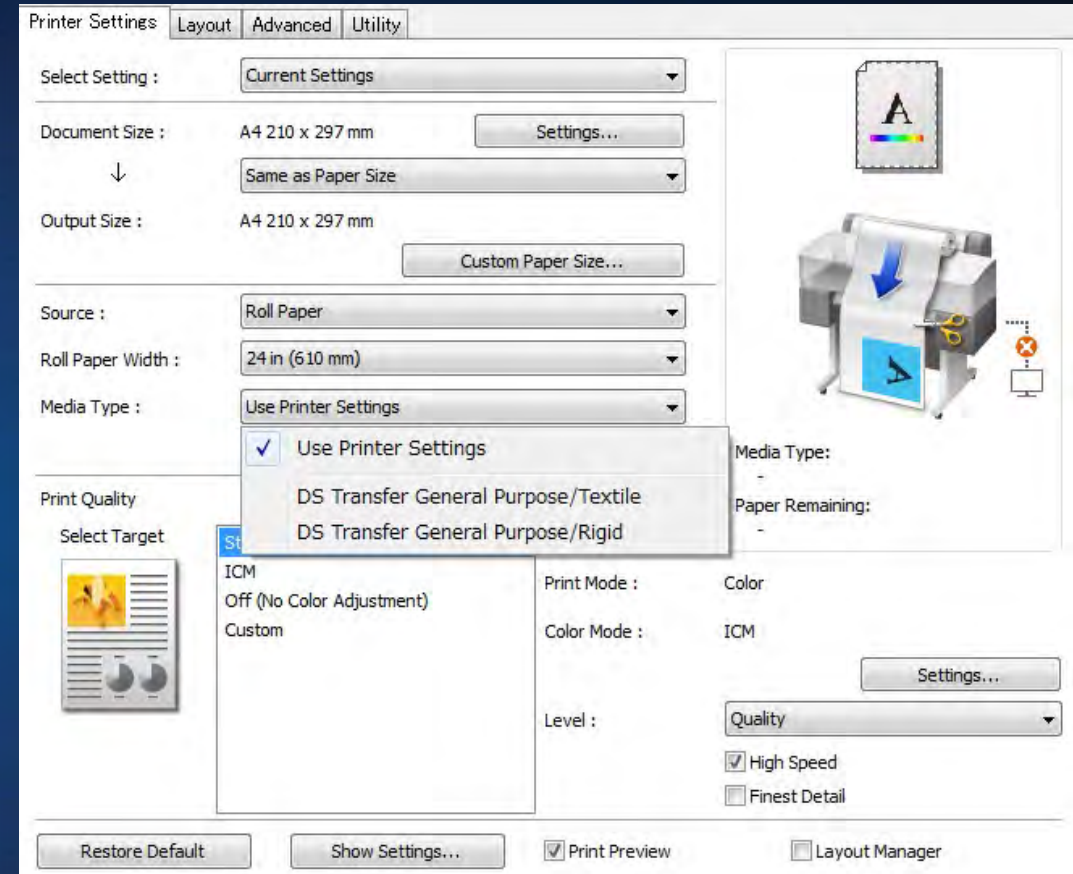
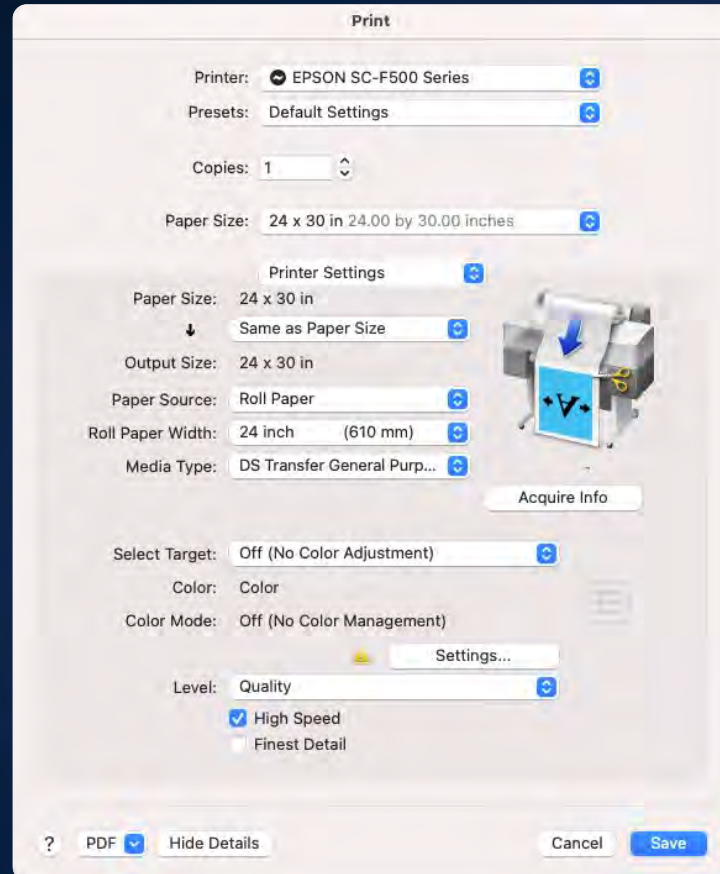
Control specific print job settings





# System Driver Print Software

Epson SureColor F570 Pro



## System Print Driver Included

- Print from virtually any application
- Familiar print interface
- macOS and Windows support



# Epson Edge Print PRO

## Software Feature Comparison



	Epson Edge Print PRO	System Driver
<b>Supported OS</b>	Windows 10, 8	Apple macOS, MacOS X Windows 10, 8
<b>Applications Support</b>	Print directly from application	Print directly from application
<b>File Format Support</b>	PDF, PS, EPS, TIFF, JPEG, PNG	—
<b>Adobe PDF Print Engine</b>	YES	—
<b>Adobe PostScript 3</b>	YES	—
<b>Spot Color Management</b>	YES	—
<b>Group Spot Color Adjust</b>	YES	—
<b>Anti-Aliasing</b>	YES	—
<b>Transparency Effects</b>	YES	—
<b>Rendering Depth</b>	16-Bit	8-Bit
<b>Layout Controls</b>	Nesting, Tiling, Crop Step & Repeat	—

# Epson Job Accounting Tool

Epson SureColor F570 Pro

Job Information List

EPSON SC-P7000 Series  
S/N: VM2E000174  
Data Acquisition: 1/1/2018 8:00:00 AM

Printer: EPSON SC-P7000 Series S/N: VM2E000174 Add Printer Price Settings Preferences

Period: Starting Month: Starting Day: Jobs to display: 50 Search Filter Settings

Job Name	Total Cost	Media Type	Media Usage	Ink Usage	Completion T.	User Name
Microsoft PowerPoint - 3MonthCha	\$95.15	Plain Paper	1.02 m <sup>2</sup>	1.25 ml	10/10/2018	5007185
Microsoft Power...	\$ 0.00	Plain Paper	0.51 m <sup>2</sup>	0.70 ml	10/10/2018	5007185
Nozzle Check	\$ 0.00	Plain Paper Thick	0.06 m <sup>2</sup>	0.00 ml	10/10/2018	Printer
Microsoft Power...	\$ 0.01	Plain Paper Thick	1.02 m <sup>2</sup>	1.21 ml	9/25/2018	5007185
Nozzle Check	\$ 0.01	Plain Paper Thick	0.06 m <sup>2</sup>	0.01 ml	9/25/2018	Printer
Nozzle Check	\$ 0.04	Plain Paper Thick	0.06 m <sup>2</sup>	0.05 ml	9/25/2018	Printer
Nozzle Check	\$ 0.02	Plain Paper Thick	0.06 m <sup>2</sup>	0.03 ml	9/25/2018	Printer
Nozzle Check	\$ 0.01	Plain Paper Thick	0.06 m <sup>2</sup>	0.02 ml	9/25/2018	Printer
Microsoft Power...	\$ 0.39	Plain Paper Thick	0.51 m <sup>2</sup>	0.58 ml	9/25/2018	5007185
Microsoft Power...	\$ 0.07	Plain Paper	0.06 m <sup>2</sup>	0.10 ml	9/25/2018	5007185

Summary of Selected Period

Total Jobs	10	
Total Ink	5.55 ml	\$ 3.67
Total Media	2.26 m <sup>2</sup>	\$ 287.89
Other Costs		\$ 0.59
Total Cost		\$ 292.15

Selected Period  
All Periods

Export to CSV Detailed Job Info

Job Accounting Tool software  
Keep track of print usage and costs over time





# Advanced Media Handling



- Roll Media Handling
  - High ease of use with Auto-Loading and de-skewing
  - Supports roll widths from 8.3" to 24.4" on 2" diameter core
- Auto-Sheet Feeder
  - Automatically switch between roll to cut-sheet without unloading/loading paper
  - Supports sheet sizes from 8.3"x11" to 11"x17"
  - Removable output stacker keeps sheets neatly organized for unattended printing
- Manual Sheet Feeder
  - Supports manually loading of custom sheets up to 24.4" wide and 708" long
- Epson Transfer Paper Optimized for Print Quality
  - Epson DS Transfer Multi-Use paper is optimized for high photo quality on rigid materials with minimal grain, and excellent coverage on soft/fabrics materials.



# Optional Features

Epson SureColor F570 Pro



## Printer Stand

Easily move printer with large catch basket



## Epson Preferred Plus Service Plan

Additional 1 year of coverage



# What's in the box

Epson SureColor F570 Pro



SureColor F570 Pro printer includes in the box:

- SureColor F570 Dye-Sublimation Printer
- Epson Edge Print PRO workflow software
- 2 sets of 140mL CMYK Ink bottles (8 bottles total)
- 3 Rolls of Epson DS Multi-Use Transfer Paper (24"x100' roll + 2 x 17"x100' rolls)
- 1 Year Epson Preferred Plus Limited Warranty
- Power cable

Additional Available for download at <http://support.epson.com>

- macOS and Windows Print drivers
- Job Accounting software

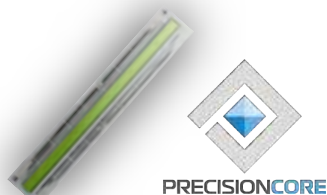




# Complete Epson Genuine Solution



Printer Hardware



PrecisionCore  
Printhead



Genuine Supplies

All key components have been developed by  
Epson to deliver the best performance.

"We focus on the printing details,  
so you can focus on growing your business"



Epson Edge Print PRO  
Workflow Software



Epson Service & Support

## Specifications are subject to change without notice

The SureColor F570 is designed to use only Epson ink cartridges and refill packs and no other brands of new or refilled cartridges, or other brands of ink or bulk ink systems. Using Epson ink is important for reliable performance and high image quality.

\*Oeko-Tex Standard specifies testing criteria for the presence of harmful substances within a textile product. The standard belongs to the International Association for Research and Testing in the field of Textile Ecology (Oeko-Tex).

Epson, Epson UltraChrome, PrecisionCore, and SureColor are trademarks or registered trademarks and EPSON Exceed Your Vision is a registered logo mark of Seiko Epson Corp.

All other product brand names are trademarks and/or registered trademarks of their respective companies. Epson disclaims any and all rights to these trademarks.

© Epson America, Inc. 2021 TC 06.23.21

