

4-Prong Mug Press Attachments for Skinny Tumblers

JOHNSONPLASTICS
PLUS

JP4H6-4 | JP4H7-4

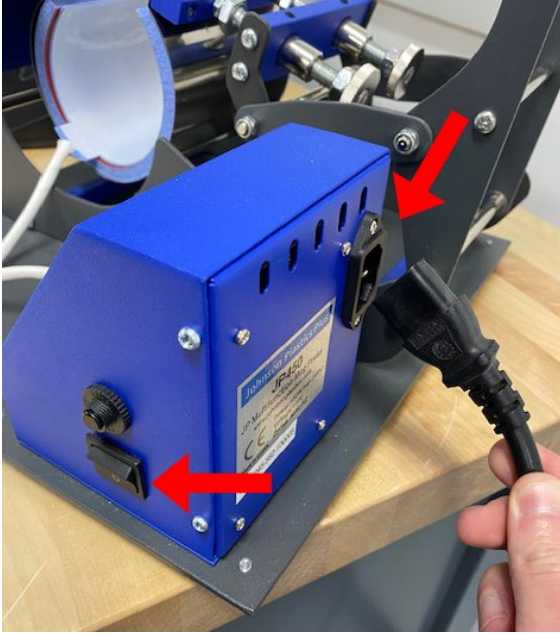


INSTRUCTIONS

Recommended Equipment & Accessories

- JP450 Mug Press (verify the mug press has 4-prong heat element connection)
- Philips head screw driver

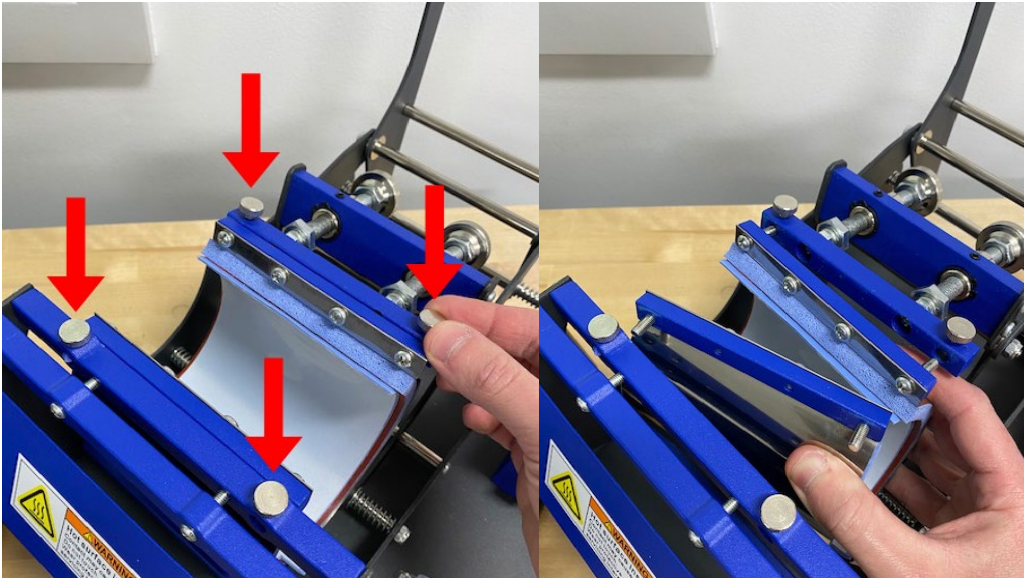
- Before setting up and assembling the 20oz or 30oz mug press attachment, check to make sure the prongs on the plug of the attachment match the prong fitting of the socket on your JP450 mug press.
 - A 4-prong attachment will only work on a 4-prong mug press.
 - See Mug Press Attachments document for a list of 4 prong item numbers.
- Ensure that the mug press power is off and the power cable is unplugged.



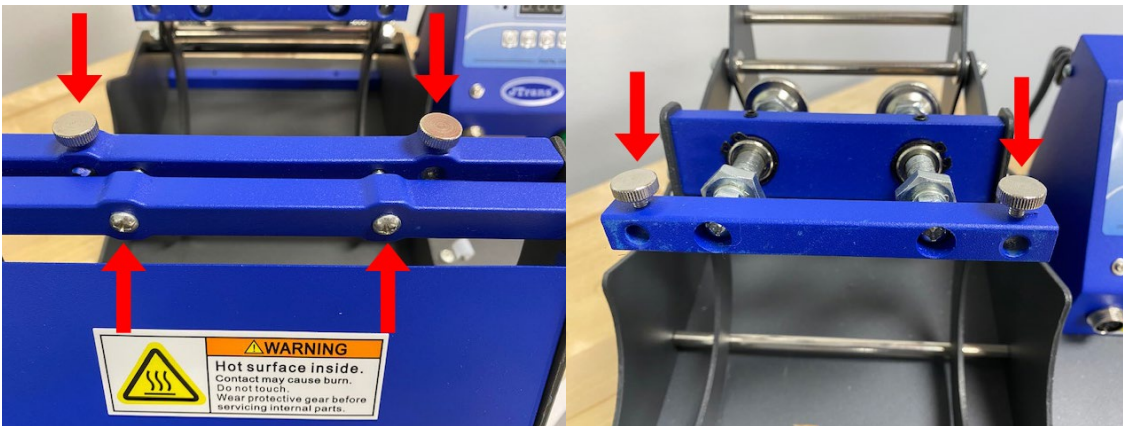
- Remove the current mug press attachment by loosening the set screw and disconnect the heat wrap cable from the mug press display box.



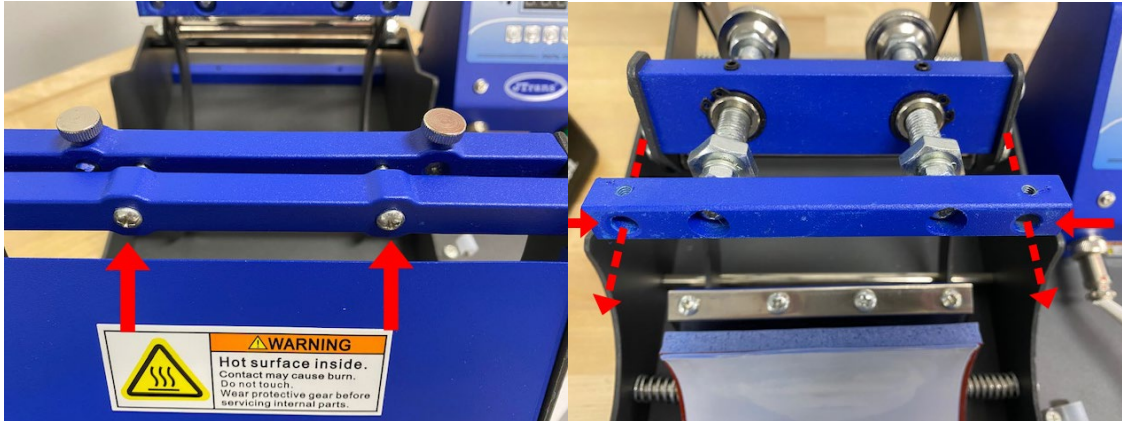
- Loosen the thumb screws of the heat wrap from the mug press chassis, then remove the heat wrap from the press chassis.



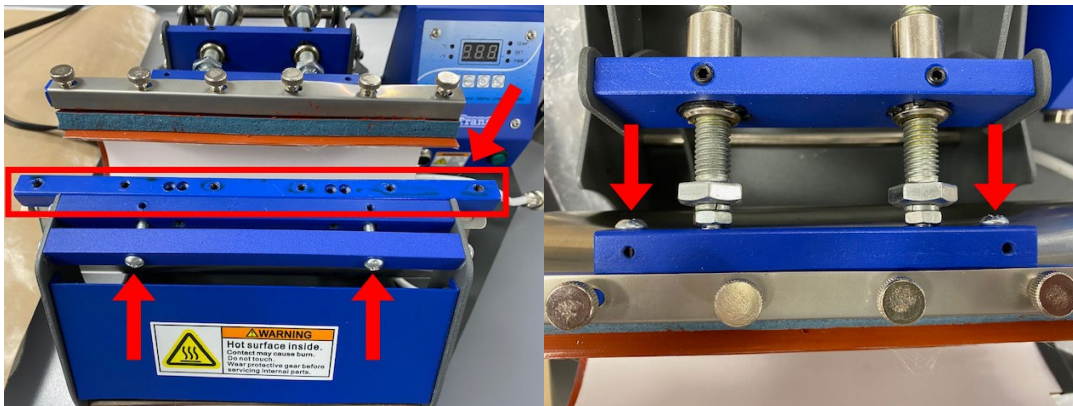
- Use a Philips head screw driver to completely remove the two mounting screws located on the front of the wrap mount. Also completely remove the thumb screws from the front and back of the press chassis.



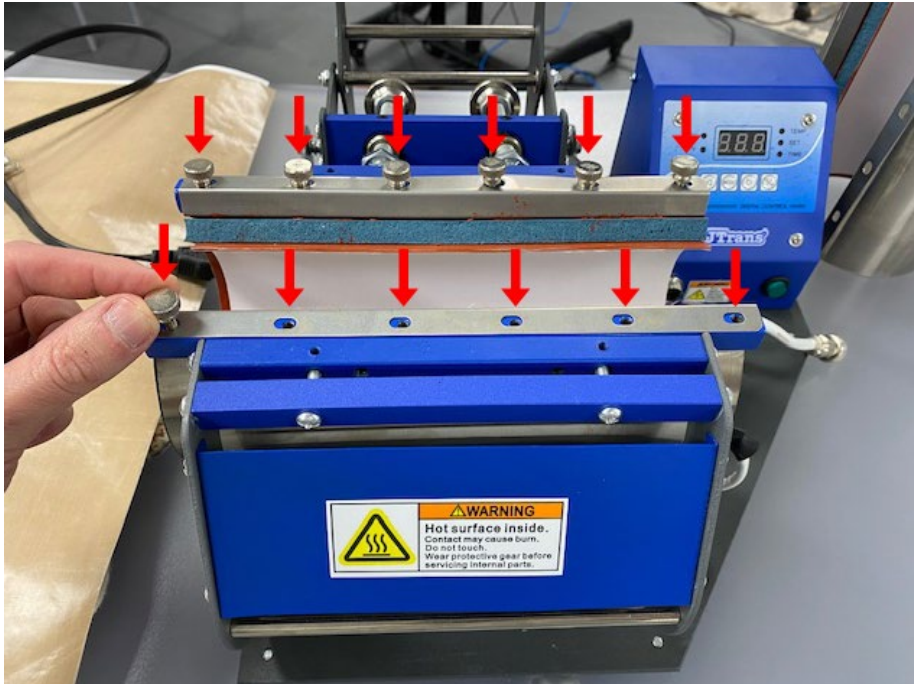
- Use a Philips head screw driver to screw in the replacement long screws provided with the mug press attachment into the mounting holes on the front of the chassis. Place the remaining replacement long screws into the horizontal mounting holes on the back of the press chassis. Only tighten/place the screws enough to be held in place temporarily.



- Place the two long blue bars provided with the mug press attachment on the front and back ends of the chassis. Use a Philips head screwdriver to finish screwing in the long screws on the front and back of the press chassis into the bars until they are snug.



- Place the mug press attachment onto the long blue bars. Attach the wrap to the blue bars using the provided thumb screws.



- Plug the mug press attachment cord into the socket of the mug press display and screw in the set screw until it is snug.



- Plug the mug press power in and turn on the power switch.
- Adjust the tension of the mug press attachment as needed for pressing tumblers and similar drinkware items.

To order more of this product, see similar products and much more, please visit jpplus.com.

For additional product support and troubleshooting, please contact JPPlus Advanced Support Team:

- Phone: 419-500-4877
- Email: ast@jpplus.com
- Schedule an appointment: <https://jpplusadvancedsupport.setmore.com/>