

Gyford LED StandOff Kits

STANDARD ASSEMBLY



BARREL

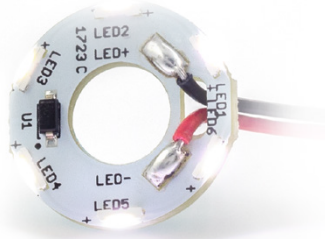
Gyford LED StandOffs are manufactured in the USA from high-quality aluminum and are machined precisely to accommodate our specialized LED board wiring.



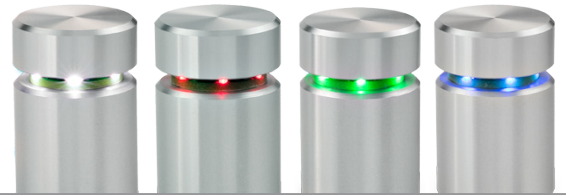
LED BOARDS

The LED boards have been designed with side-firing diodes and installs over the mounting stud that secures the material to the StandOff. Unlike other lighting effects that shine light on the material, the side-firing LED shines light through the material, creating an eye catching display.

NOTE: Always handle LED boards and wiring connections with care to avoid damage to circuitry.



LED boards are available in four colors: white, red, green & blue



DISPLAY MATERIALS

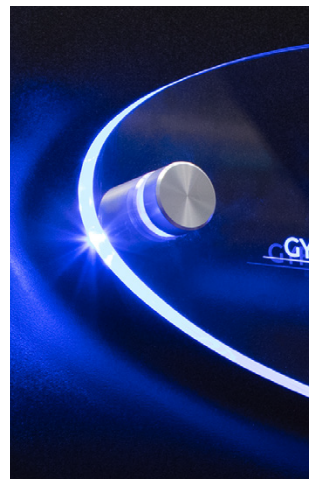


Material requires a 13/16" mounting hole. For best results, fine sand the inside of hole after drilling.

NOTE: The LED board should install easily into the hole as not to damage circuitry.

For best results, use an optically clear material (glass, acrylic, etc.) Illumination effect will also be visible with colored substrates and decorative resins.

(Sanded edge)



Typically, laser or 'raster' engraving produces a brighter and more precise result than with a router. Crystal adhesive vinyl will pick up subtle light.

The edge of materials can be polished or sanded to enhance the LED effect. Sanding provides an even glow while a polished edge will allow the light to shine and flair.

(Polished edge)

Gyford LED StandOff Kits

WIRE CONNECTIONS

The system can be connected using a variety of common wire nuts and connectors found at most hardware stores. Make sure to maintain the same polarity on all connections. Power supply is 28v @ 0.64 amp.



Butt Splice Connectors



Wire Nuts



Butt splice example



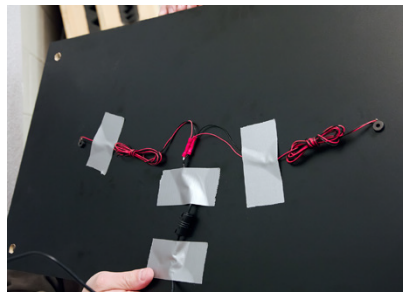
CAUTION: If you are at all unsure about completing any aspect of this or other wiring projects, consult a qualified electrical contractor to perform the service(s) for you. Always follow electrical code requirements specific to your area. Before undertaking any electrical project, contact your local electrical authority and your insurance company to ensure that you comply with all policies, warranties and regulations and authorities concerning this work.

BARREL MOUNTING

Below is an example of a simple LED system mounted using a backer panel mounted separately to an interior drywall surface.



Place the barrel to mark holes for mounting hardware and wiring. Drill 11/32" for anchoring center and 5/32" for wiring hole.



Once the LED barrels are in place, the wiring can be coiled and taped / fastened to the backer panel.

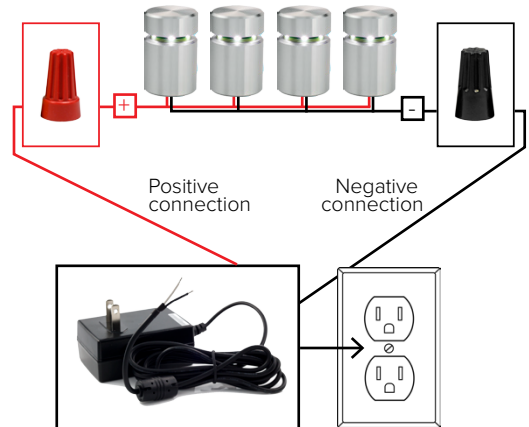


In this example, the backer panel is mounted to drywall using a standard low-profile cap and barrel.



LED power supply wiring can be hidden on the wall using shelf wire raceways

A basic four (4) LED StandOff configuration.



Up to a sixteen (16) LED StandOff configuration using a single power supply. (60' max wiring distance). Any amount greater than 16 total LEDs requires an additional power supply.

